

[www.transformation2013.org](http://www.transformation2013.org)



## Improving Student Achievement Outcomes

### Partnerships



A collaborative effort between Region XIII, Region 20, and their partners.

Updated: 2/15/08

For more information:  
[www.transformation2013.org](http://www.transformation2013.org)

#### Contact information: Region XIII

Stacy Avery, Coordinator  
512.919.5391  
[stacy.avery@esc13.txed.net](mailto:stacy.avery@esc13.txed.net)

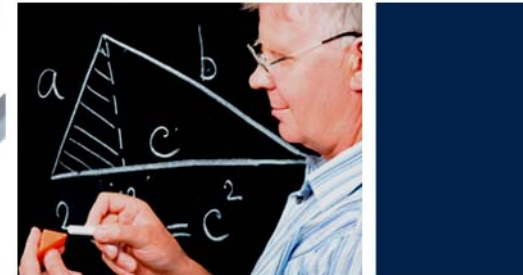
Cassandra Ricks, STEM Innovation  
Coach - Math Specialist  
512.919.5139  
[cassandra.ricks@esc13.txed.net](mailto:cassandra.ricks@esc13.txed.net)

#### Region 20

Julianne Webb, PDI Coordinator -  
Science Specialist  
210.370.5497  
[julianne.webb@esc20.net](mailto:julianne.webb@esc20.net)

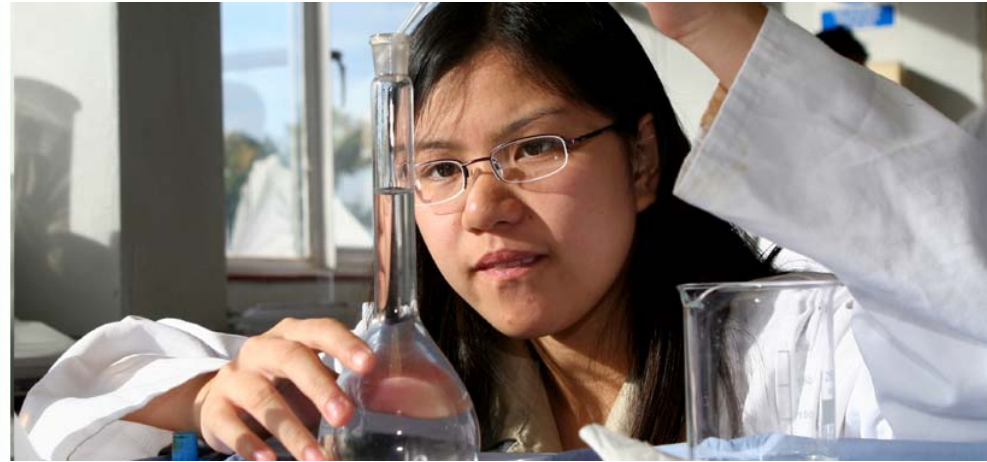
### Transformation 2013

Texas Science  
Technology  
Engineering &  
Math (T-STEM)  
Center



Transformation  
**T-STEM 2013**  
New Directions | New Pathways | New Outcomes

[www.transformation2013.org](http://www.transformation2013.org)



*“The T-STEM project is a comprehensive system of support, accountability, and networking to build and share knowledge capacity.”*

### Transformation 2013

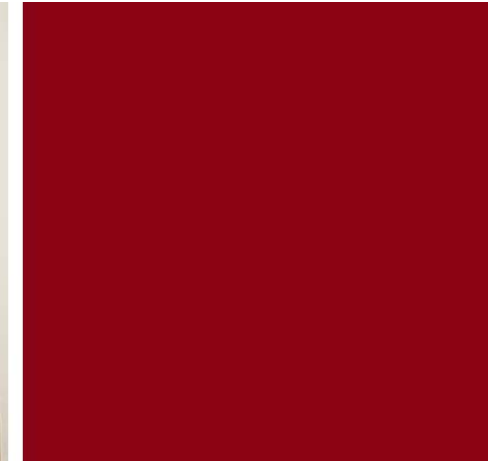
Transformation 2013, a collaborative effort between Education Service Center, Region XIII, Region 20 and their partners, is committed to improving student achievement in all demographic groups, specifically, historically underrepresented populations in **math and science as determined by state and national standards.**

As a science, technology, engineering, and math (STEM) center, Transformation 2013 provides innovative research-based teacher professional development. Participants engage in discussions with industry experts through industry site visits, panel discussions, or speaker forums. Participants become members of a professional learning community that includes STEM colleagues, higher education partners, industry experts, and science and math curriculum specialists to create a network to support STEM implementation. Upon completion of the professional development institutes, participants will walk away with TEKS-aligned design challenges to incorporate into their classrooms and have access to design challenges created by their STEM colleagues.

### Professional Development

Transformation 2013 is proud to present exciting professional development opportunities for STEM educators and leadership teams. Through our professional development institutes, participants will experience design challenges, a hands-on experience that integrates science, technology, engineering and math.

Our campus leadership institute is designed to educate leadership teams regarding changes needed to support science and math educators who incorporate STEM best practices into their classrooms.



### 2008 Professional Development Offerings

WORKSHOP	DATES	LOCATION	WORKSHOP	DATES	LOCATION
Engineering is Elementary, <u>The Best of Bugs: Designing Hand Pollinators</u>	Feb. 20	Region 20	DSI – Design Scene Investigation: Leadership Academy	June 23-25	Region XIII
Engineering is Elementary, <u>The Best of Bugs: Designing Hand Pollinators</u>	Feb. 22	Region XIII	DSI - Design Scene Investigation: Solving problems using data collection tools	June 30, July 1, 2	Region 20
STEM Best Practices Conference	Feb. 27	Region XIII	<u>Building Math</u> : Using the Engineering Design Process to Solve Problems	July 14-15	Region XIII
<u>Building Math</u> : Using the Engineering Design Process to Solve Problems	Mar. 6-7	Region 20	<u>Building Math</u> : Using the Engineering Design Process to Solve Problems	July 24-25	Region 20
Engineering is Elementary, <u>Catching the Wind: Designing Windmills</u>	Mar. 12	Region 20	DSI - Design Scene Investigation: Solving problems using data collection tools	July 28-30	Region XIII
Engineering is Elementary, <u>Catching the Wind: Designing Windmills</u>	Apr. 2	Region XIII	DSI - Design Scene Investigation: Solving problems using Lego Mindstorms w/ NXT	Aug. 11-15	Region 20
DSI - Design Scene Investigation: Solving problems using Lego Mindstorms w/ NXT	June 5- 6, 9-11	Region XIII			